



Building for Greater Impact

Stage 2

God desires that His church passionately serves Him by making disciples of all people (Matthew 28:18-20; Acts 1:8). Our Stage 1 development opened in 2014 significantly extending our ministry centre so that more lives are touched and transformed by the gospel.

Through our vision to grow, impact our wider community, and see lives transformed the church decided in November 2019 to take a further step of faith by undertaking Stage 2 of our development. But then the pandemic arrived and our plans were put on hold.

It is now time to proceed with these plans. This step of faith will enable our facilities to reflect the welcoming heart of our people and our God and provide space to expand our pastoral team as God chooses to grow our church into a fruitful long-term future.

Our past – our future

Almost 69 years ago, on 2 December 1952,

a small faithful group of people established the Narwee Baptist Fellowship and purchased the land on which the church property now stands. The fellowship was constituted as a church in 1954 and the first church building was officially opened in 1956.

In 1969 a new church building, seating 250, was built through the generous giving of its people. 10 years later the building was extended to seat a further 150 people.

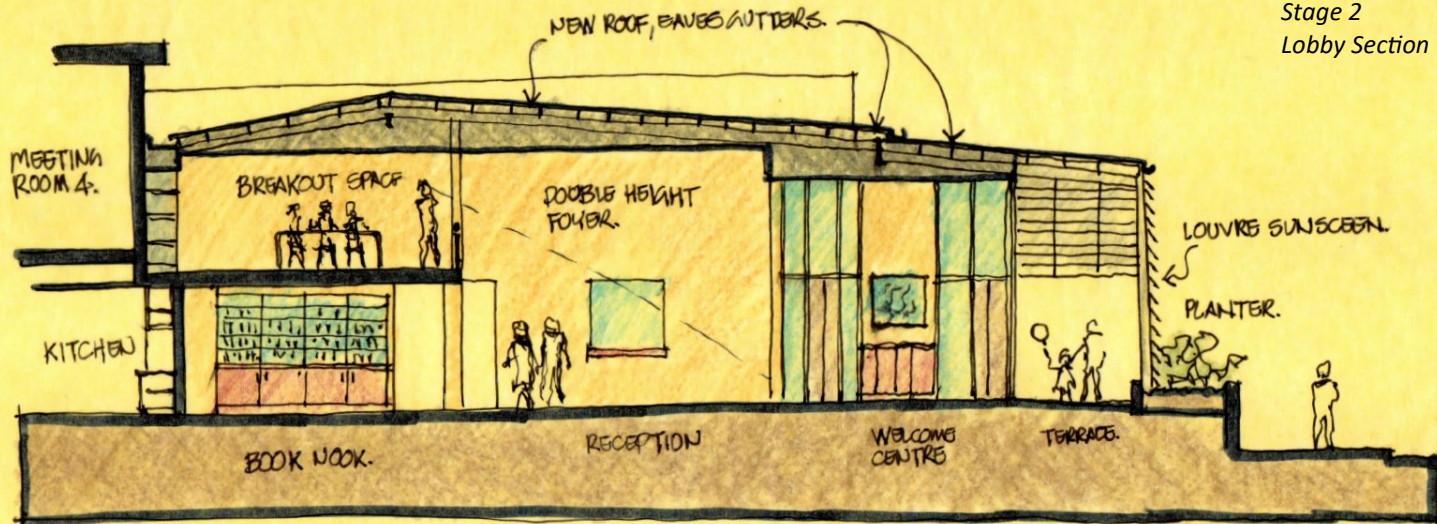
In 1990 a new Christian Education Centre was built, incorporating facilities for the community radio station, 90.1 NBCFM.

On 29 May 1992 the church building was destroyed by fire. The auditorium we now meet in was opened on 29 May 1994 with a seating capacity of 400.

The Stage 1 additions to our Ministry Centre were opened on 16 March 2014.

*Stage 2
External view—Baumans Road*





Key Features

Back in 2013 we undertook the Stage 1 redevelopment work creating 4 new upstairs meeting/teaching rooms, 2 new kitchens, additional toilets, and significantly expanded children's/nursery facilities based on a Development Approval we received from the then Hurstville City Council.

This approval also encompassed an overall masterplan including the rejuvenation of the lobby and 2 storey area which could be implemented if or when the radio station vacated. With the Radio Station now having vacated the upper floor above the Pastoral offices the opportunity exists to address some of its inadequacies for the current and future ministries and develop opportunities for reorganising our premises to enhance our ministries and impact on the community with the gospel.

Expanded Lobby

- *to provide improved 'Welcoming' experience*

Currently too small and very congested with welcoming, event registrations and book sales, especially with major services it is even more congested when used as overflow space.

Increased Pastoral Offices

- *to provide improved administration facilities and for future growth*

Cramped, inadequate and dislocated pastoral offices with no capacity for further expansion.

Additional Dedicated Storage Facilities

- *to accommodate increasing requirements of existing ministries and, support creation of new ministries*

Inadequate storage space on the ground floor for bulky items results in areas being taken which should be meant for ministry activities.

New Casual Interaction Opportunities

- *to provide for increased variety of meeting and interaction spaces*

The first stage formal meeting rooms are significantly utilized. However there is also need for some additional formal meeting spaces and some less formal gathering/interaction spaces.

General Upgrade and Maintenance

- *to address many outstanding issues within the building program*
 - new roof to lobby which has suffered continual water leaks and damage for many years.
 - Auditorium upgrade – new carpets, seating and upgrading the sound system.
 - address some outstanding safety and compliance issues.

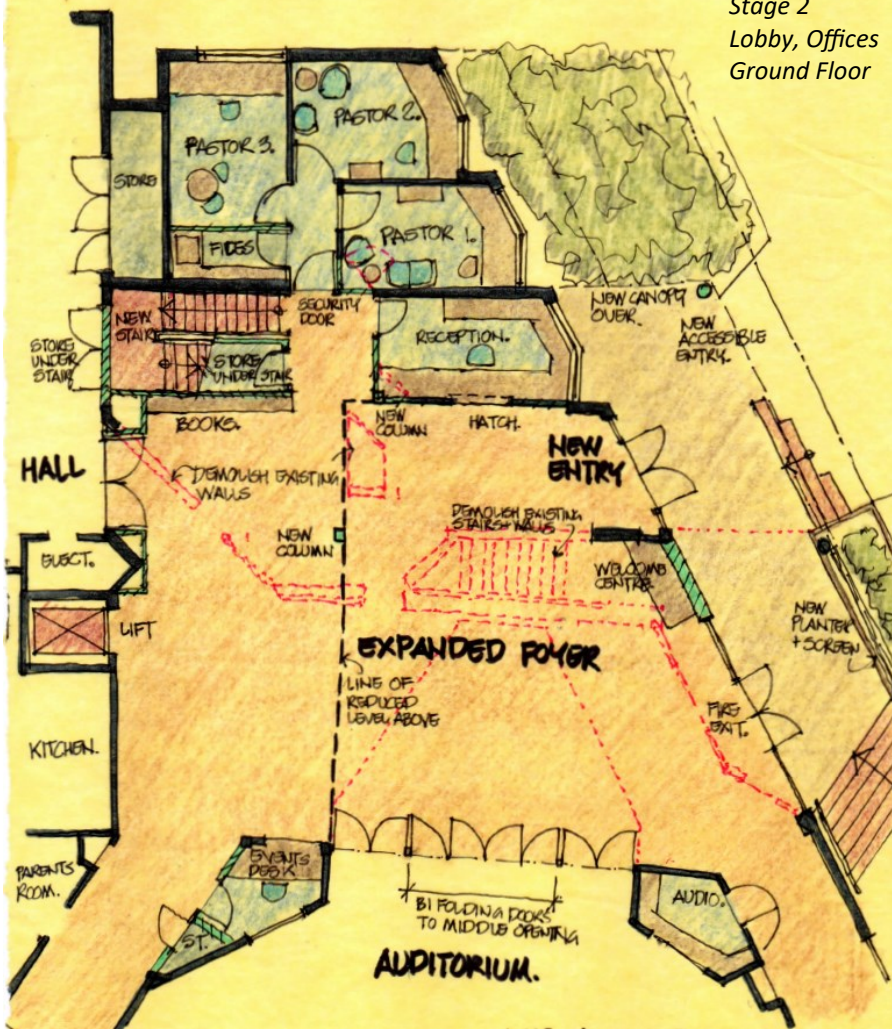


View from auditorium doors— existing



View from auditorium doors— proposed

Stage 2
Lobby, Offices
Ground Floor



Your contribution

Throughout Narwee's history people have given generously and sacrificially to build facilities to fulfill God's mission. No project comes without cost and sacrifice. It will take everyone's contribution and effort as we raise the finances to see this vision become a reality.

Expanding our foyer, increasing our pastoral office space, providing dedicated storage facilities, and refreshing the auditorium will help us reach more people effectively and see them become passionate followers of Jesus.

Please join us in this strategic step of faith!

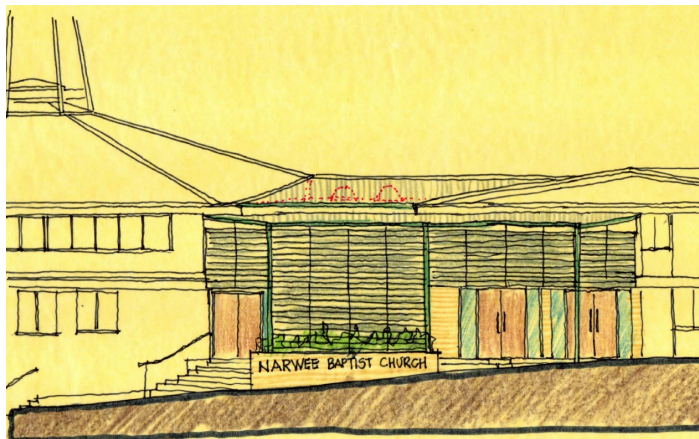


The Process

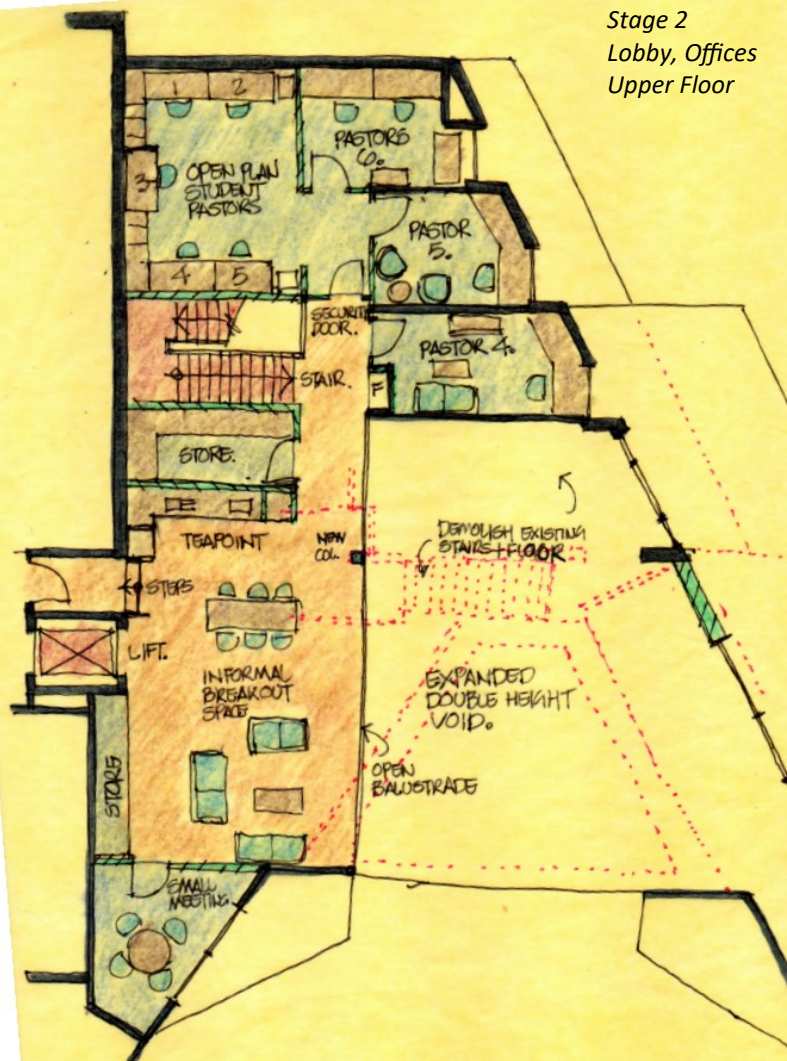
During 2018 the church's Property Development team identified our current property needs and recommended the Stage 2 development to the church. At the November 2019 members meeting, the church decided to move forward and complete the design.

At all our services on 11 July 2021 we will present the Stage 2 development again to the church community.

The final detailed design (including a full cost plan) will be presented to the 31 August 2021 members meeting which will decide whether to send the documents to tender. If that meeting decides to proceed, the final legal decisions to sign contracts and borrow money can be made at the AGM in November with work commencing in December and being completed by June 2022.



Stage 2
Lobby, Offices
Upper Floor



Your Role

No project of worth comes without cost and sacrifice. It will take everyone's generous and sacrificial contribution and effort to cover the estimated cost of \$1.8 million.

Equal Sacrifice...Not Equal Gifts

Sacrifice means willingly giving the best I have for a greater purpose. We cannot all give the same amount but we can all give sacrificially. Giving to the building fund needs to be in addition to our regular giving so our ministries do not suffer.

Suggested steps for determining God's will for your giving:

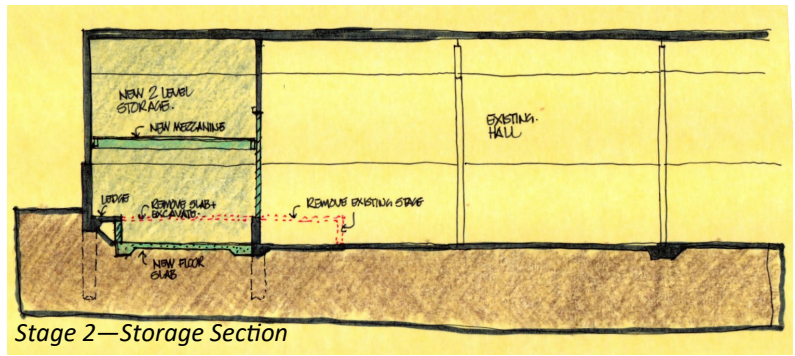
- Pray daily, "Lord I/we want to contribute and give sacrificially. Please show me/us how to commit to a gift that will stretch my faith".
- Give yourself to prayerfully consider creative and responsible ways to decrease expenses and/or increase income.
- Be wise by considering your financial situation and by not over-committing.

Consider the following Bible passages:

Remember this: Whoever sows sparingly will also reap sparingly, and whoever sows generously will also reap generously. Each of you should give what you have decided in your heart to give, not reluctantly or under compulsion, for God loves a cheerful giver. (2 Corinthians 9:6-7)

But since you excel in everything—in faith, in speech, in knowledge, in complete earnestness and in the love we have kindled in you—see that you also excel in this grace of giving. (2 Corinthians 8:7)

Do not store up for yourselves treasures on earth, where moths and vermin destroy, and where thieves break in and steal. But store up for yourselves treasures in heaven, where moths and vermin do not destroy, and where thieves do not break in and steal. For where your treasure is, there your heart will be also. (Matthew 6:19-21)



Stage 2—Storage Section

How do we fund this development?

The estimated total cost of the Stage 2 development is \$1.8 million. Over \$450,000 was pledged in 2019 and indeed some money has already been received. But much has happened since then, such that it is necessary to reassess funding of the development.

Our Treasurer has already contacted those who pledged support in 2019 so that they can confirm or amend their pledge based on their current circumstances.

The accompanying pledge form is for the use of those who would like to pledge financial support for the Stage 2 development **for the first time**. This can be done as a **lump sum gift**, as a **periodic gift** over two or more years, or as an **interest free** or **low interest loan** to the church through Baptist Financial Services.

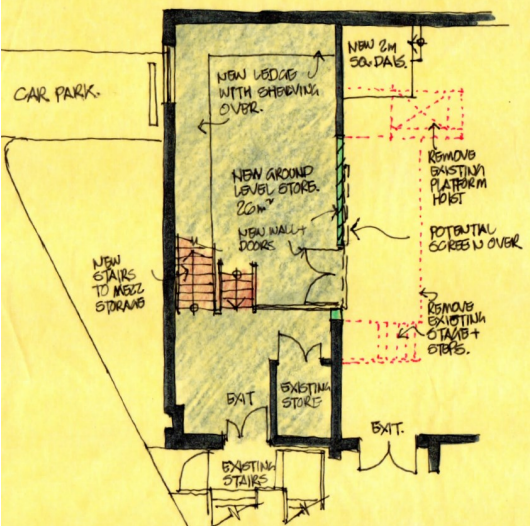
The table shows that even a small contribution can make a difference. Whether you can make a large donation or a small donation each week or month over 2 years, helps to reach our target.

Remember it is about Equal Sacrifice...Not Equal Gifts.

Please take time to pray and consider what you can contribute so that we can make a greater impact for the glory of God.

Your pledge can be made on the separate pledge form and submitted to the Treasurer, Andrew McDonald, by placing it in the offering box in the church foyer. Alternatively you can email treasurer@narweebaptist.org.au with details of your pledge. Pledges will be kept in confidence by the Treasurer.

Stage 2—Storage Plan



Households/ Families	Lump Sum Gift per household (\$)	Equivalent weekly amount over 2 years (\$)	Total Raised (\$)
3	25,000	240	75,000
20	10,000	96	200,000
50	5,000	48	250,000
50	2,500	24	125,000
50	1,000	10	50,000
100	500	5	50,000
273		423	750,000